



Page Street, Westminster
London SW1P

GARTONJONES.COM



Page Street, Westminster
London, SW1P

GARTON JONES.COM

49 Marsham Street Lettings:
London +44 (0) 20 7340 0480
SW1P 3DP westminster@gartonjones.com
www.gartonjones.com

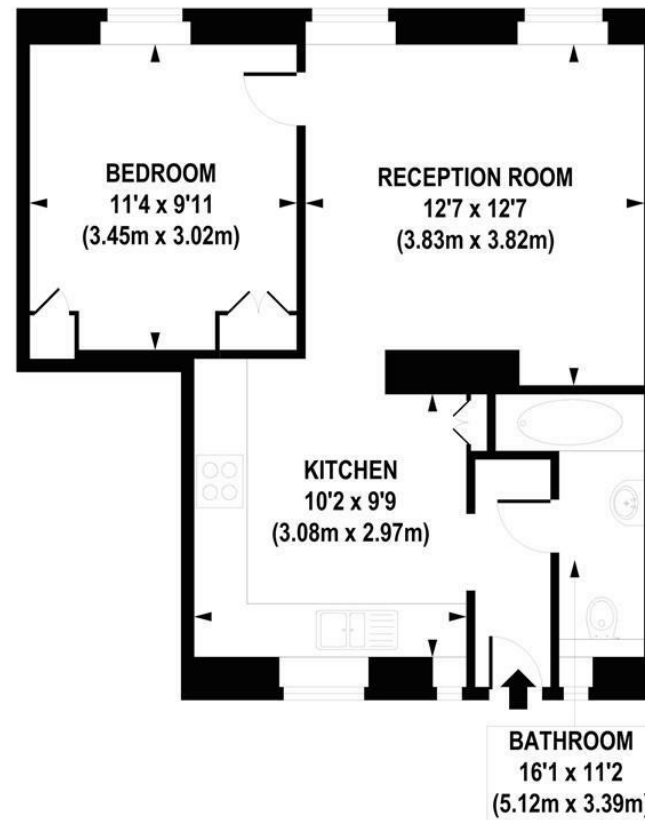
£430 Per Week

A bright and spacious apartment available to let in the heart of Westminster. This well presented property with contemporary furnishing is located on the ground floor of this established, secure development. The living space comprises of a reception room, large modern integrated eat-in kitchen with gas hob, bathroom and good storage. Tothill House is located on Vincent Street close to the junction with Marsham Street, moments from the Tate Gallery, River Thames and excellent local amenities. The Tube Links of both St James's Park and Westminster are within easy reach as are the many amenities of Victoria Street and Horseferry Road.

Council Tax Band C (London Borough of Westminster)
Minimum Term 12 Months
5 Weeks Deposit
EPC Rating: C (71)

- Beautifully Presented One Bedroom Apartment
- Reception Room
- Integrated Eat-In Kitchen
- Modern Bathroom
- Double Bedroom With Built In Wardrobes
- Wood Flooring
- Contemporary Furnishing
- Available: 9th January 2026
- Close To Local Amenities
- St James's Park And Westminster Tube Stations Within Easy Reach





GROUND FLOOR

APPROXIMATE GROSS INTERNAL AREA 488 sq. ft / 45.36 sq. m

